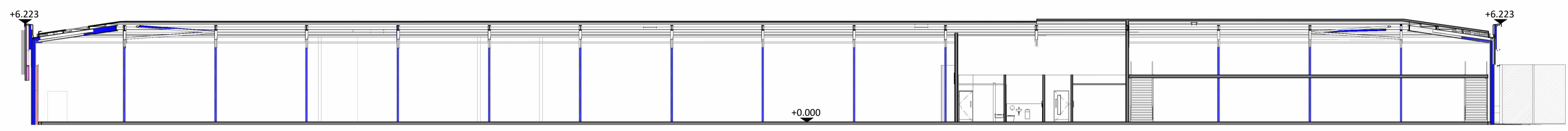
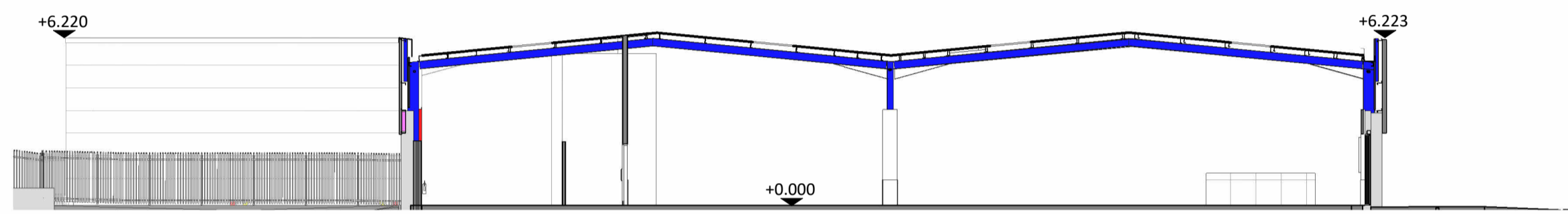


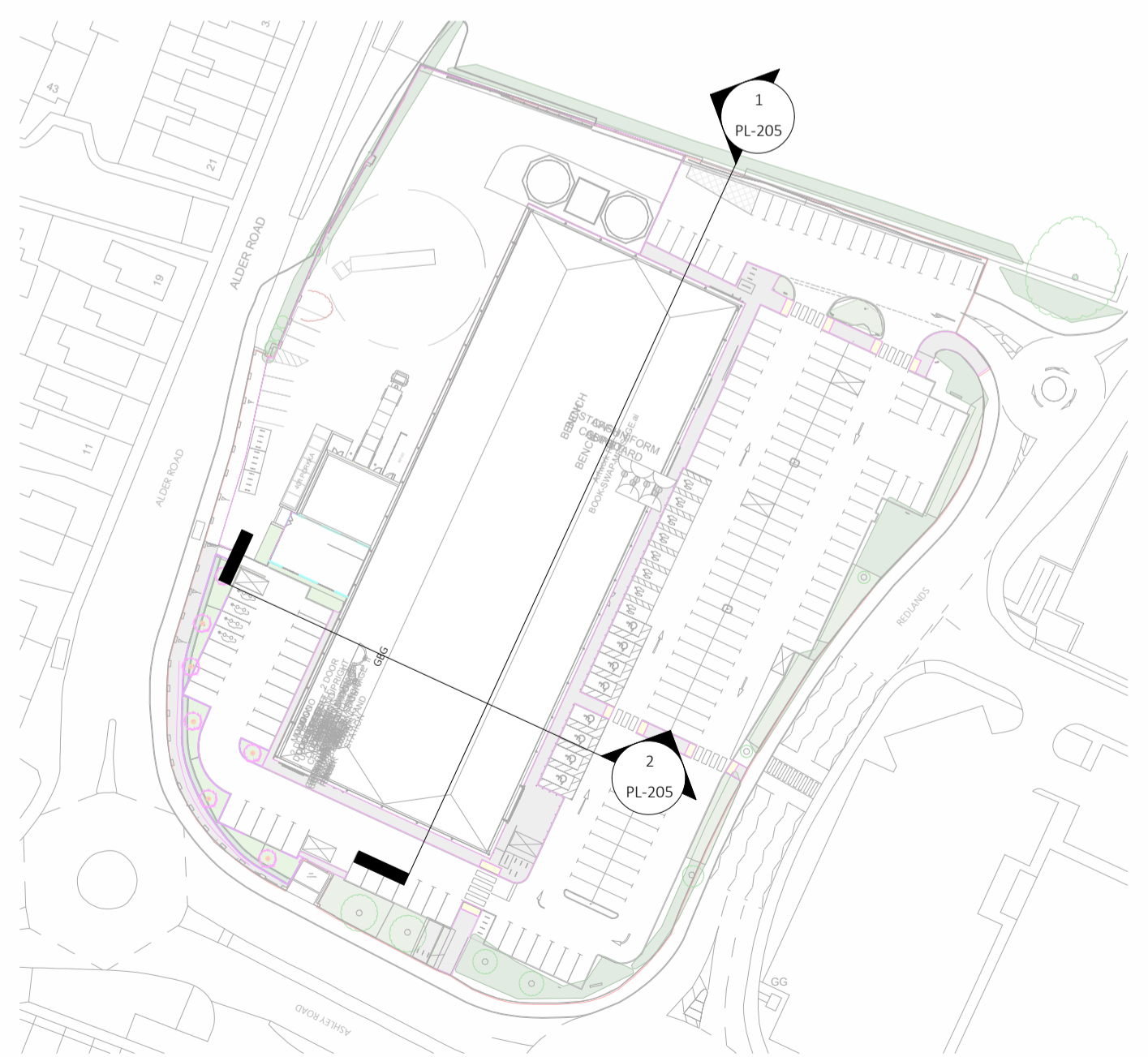
© Whittam Cox Architects - Disclaimer
 This drawing is copyright of WCEC Group Ltd trading as Whittam Cox Architects, and shall not be reproduced nor used for any other purpose without the written permission of the Architects. This drawing must be read in conjunction with all other related drawings and documentation. It is the contractors responsibility to ensure full compliance with the Building Regulations. Do not scale from this drawing, use figured dimensions only. It is the contractors responsibility to check and verify all dimensions on site. Any discrepancies to be reported immediately.
 IF IN DOUBT ASK.
 Materials not in conformity with relevant British or European Standards/Codes of practice or materials known to be deleterious to health & safety must not be used or specified on this project.



Section 1
 1 : 200



Section 2
 1 : 200



Sections Location Plan
 Scale: NTS



No	Date	Description	By	Ckd
PO2	14.11.25	Updated following client comments	AL	CH
PO1	11.07.25	Initial issue.	GN	CH

CLIENT

M&S
 EST. 1884

STORE NAME
 M&S Poole, Redlands

COUNTRY
 ENGLAND

PROJECT
 M&S Poole, Redlands - New Foodhall

DRAWING TITLE
 Proposed Building Sections

CONSULTANT
 Whittam Cox Architects

DISCIPLINE DESCRIPTION
 Architect

Whittam Cox
 ARCHITECTS

Chesterfield / 01246 260 261
 London / 02033 880 019
 Leeds / 0113 468 2450
 whittamcox.com

SCALE	PAPER SIZE	DATE	DRAWN	CHECKED
As indicated	A2	July 25	GN	CH
STORE NUMBER	PROJECT NO.	DISCIPLINE CODE	NUMBER	
7636	WOS001	A	PL-205	
CONSULTANT PROJECT NO.		STATUS	REVISION	
250055		PL	PO2	